
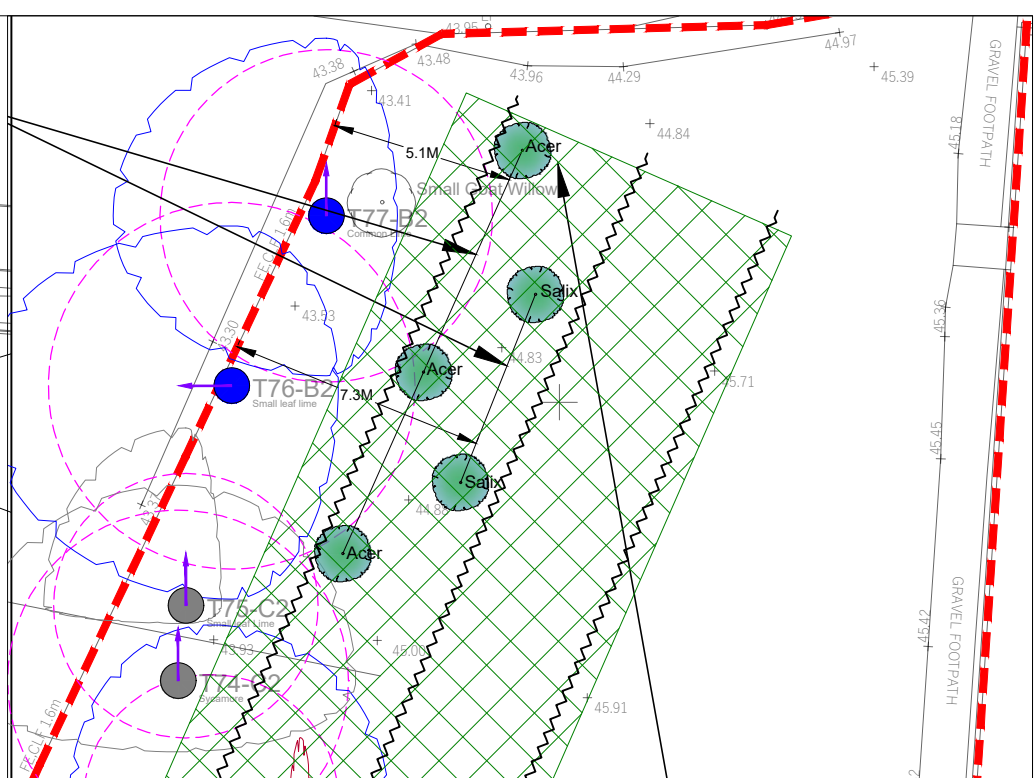



Larger specimen planting: 

Trees to be planted with stakes, ties, organic matter & mulch.

TREES					
No.	Species	Specification	Height	Density	
3 x	Acer campestre	12-14cm girth Feathered	3.0-3.5m	/	
2 x	Salix chrysocoma	12-14cm girth	3.0-3.5m	/	

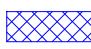


Additional understory screen planting: 

Area Width:10m | Area Length:158m | Area:1580m²
 Total No. of trees to plant: 231 trees | No. of Rows: 3 / 4 | No trees per row: 64 / 30
 Row spacing 4m, plant spacing 2.5m.
 Trees species to be evenly mixed through the area working around existing trees and shrubs to plant higher densities in more open areas.
 Each whip to be protected from rabbits with individual tree wraps and canes.
 Tree roots dipped with Alginate prior to planting.
 Immediate planting area to be clear of vegetation.
 Planting times October - March.

Preparation for planting.
 Prior to planting, the planting areas (green hatch) is to have all timber, logs and brushwood removed.

Trees					
%	No.	Species	Specification	Height	Density
15%	34 x	Betula Pendula	1+1: Transplant: 3 brks	60-80cm	2Ctr
15%	34 x	Cornus sanguinea	1+2: Branched :3 brks :B	60-80cm	2Ctr
10%	23 x	Corylus avellana	1u1: Branched: 3 brks	60-80cm	2Ctr
10%	25 x	Crataegus monogyna	1+1: Transplant: 3 brks	60-80cm	2Ctr
15%	34 x	Acer campestre	1+1: Transplant: 3 brks	60-80cm	2Ctr
10%	23 x	Ilex aquifolium	Bushy: 3 brks	40-50cm	2Ctr
5%	12 x	Ligustrum vulgare	0+1: Branched : 2 brks	40-50cm	2Ctr
10%	23 x	Pinus sylvstris	RB : Leader & Laterals	50-60cm	2Ctr
10%	23 x	Quercus robur	1u1: Transplant : 2brks	50-60cm	2Ctr

Additional understory screen planting: 

Area Width:10m - 25m | Area Length:63m | Area:1018m²
 Total No. of trees to plant: 110 trees | Row spacing 4m / Plant spacing 3m.
 Trees species to be evenly mixed through the area working around existing trees and shrubs to plant higher densities in more open areas.
 Each whip to be protected from rabbits with individual tree wraps and canes.
 Tree roots dipped with Alginate prior to planting.
 Immediate planting area to be clear of vegetation.
 Planting times October - March.

Preparation for planting.
 Prior to planting, the planting areas (green hatch) is to have all timber, logs and brushwood removed.

Trees					
%	No.	Species	Specification	Height	Density
15%	16 x	Betula Pendula	1+1: Transplant: 3 brks	60-80cm	2Ctr
15%	16 x	Cornus sanguinea	1+2: Branched :3 brks :B	60-80cm	2Ctr
10%	11 x	Corylus avellana	1u1: Branched: 3 brks	60-80cm	2Ctr
10%	12 x	Crataegus monogyna	1+1: Transplant: 3 brks	60-80cm	2Ctr
15%	16 x	Acer campestre	1+1: Transplant: 3 brks	60-80cm	2Ctr
10%	11 x	Ilex aquifolium	Bushy: 3 brks	40-50cm	2Ctr
5%	6 x	Ligustrum vulgare	0+1: Branched : 2 brks	40-50cm	2Ctr
10%	11 x	Pinus sylvstris	RB : Leader & Laterals	50-60cm	2Ctr
10%	11 x	Quercus robur	1u1: Transplant : 2brks	50-60cm	2Ctr

Total number of trees: 346

Trees					
%	No.	Species	Specification	Height	Density
15%	50 x	Betula Pendula	1+1: Transplant: 3 brks	60-80cm	2Ctr
15%	50 x	Cornus sanguinea	1+2: Branched :3 brks :B	60-80cm	2Ctr
10%	34 x	Corylus avellana	1u1: Branched: 3 brks	60-80cm	2Ctr
10%	37 x	Crataegus monogyna	1+1: Transplant: 3 brks	60-80cm	2Ctr
15%	50 x	Acer campestre	1+1: Transplant: 3 brks	60-80cm	2Ctr
10%	34 x	Ilex aquifolium	Bushy: 3 brks	40-50cm	2Ctr
5%	18 x	Ligustrum vulgare	0+1: Branched : 2 brks	40-50cm	2Ctr
10%	34 x	Pinus sylvstris	RB : Leader & Laterals	50-60cm	2Ctr
10%	34 x	Quercus robur	1u1: Transplant : 2brks	50-60cm	2Ctr
/	3 x	Acer campestre	12-14cm girth Feathered	3.0-3.5m	/
/	2 x	Salix chrysocoma	12-14cm girth	3.0-3.5m	/

Approximate planting row



Dryad Tree Specialists
 Oak Hill
 Wood Street Village
 Guildford
 GU3 3ET
 (01483) 455 555
 www.dryad-trees.co.uk

CLIENT:
 SUL - Student Urban Living Guildford Limited

SITE:
 Ash Grove Phase 2, Guildford, GU2 8UT

TITLE: **Tree planting at Ash Grove phase 2**

SCALE AT A3: 1:650	DATE: 04/03/2021	DRAWN: Tom B
PROJECT NO: D2764.V1.4	DRAWING NO: D2764.V1.4-A3-Planting	REVISION: 1.4

